



Boost Calories And Maintain An Exclusive Human Milk Diet With Humavant[®] CR Human Milk Caloric Fortifier

Humavant CR human milk caloric fortifier (human, pasteurized) is ideal for very low birth weight preterm infants receiving low caloric content. Data show that 65% of term mother's own milk (MOM) is less than 68 kcal/100 mL.¹ Humavant CR caloric fortifier can meet the need for additional calories.

- Intended for use with MOM or donor milk (DM) to increase lipids and achieve adequate growth
- Formulated to deliver 2.6 kcal/mL
- Available frozen in 30 mL bottles containing 10 mL of product (4 bottles per unit carton)
- Administer within 48 hours once thawing process begins



Humavant [®] CR Macronutrient Information (median values derived from multiple lots)			
Fat	Carbohydrate	Protein	Calories
0.26 g/mL	0.07 g/mL	0.01 g/mL	2.6 kcal/mL

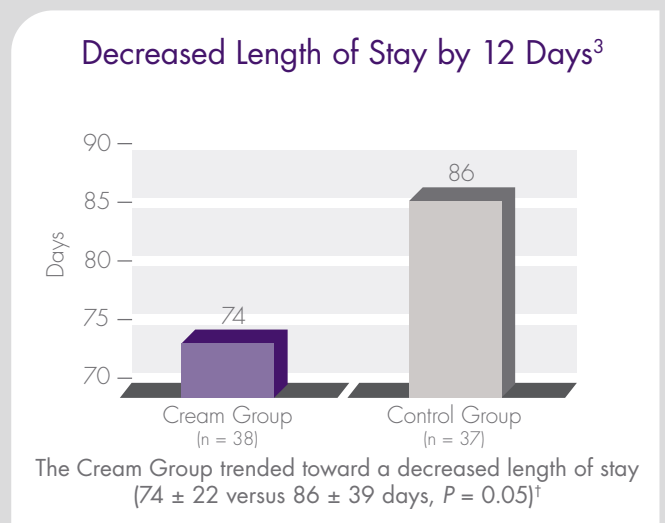
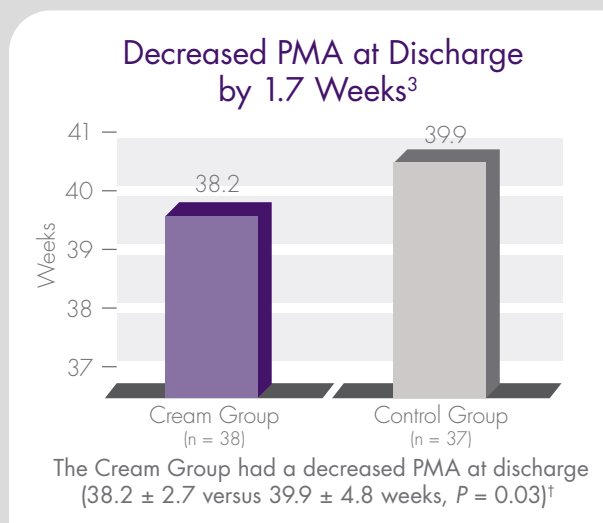


Humavant® CR human milk caloric fortifier is the only completely human solution created to add calories to MOM or DM without substantially increasing volume and without introducing a non-human milk-based nutritional product.

A randomized clinical trial found that premature infants who received an exclusive human milk diet (EHMD) with Humavant CR caloric fortifier had superior length and weight velocity compared to infants who received an EHMD without Humavant CR caloric fortifier.*²

Comparison of Growth Velocities* ^{†,2}			
	Control Group (n = 39)	Cream Group (n = 39)	P Value
Length Velocity (cm/week)	0.83 ± 0.41	1.03 ± 0.33	0.02
Weight Velocity (g/kg/day)	12.4 ± 3.9	14.0 ± 2.5	0.03

Preterm infants who received Humavant CR caloric fortifier had a significantly earlier postmenstrual age (PMA) at discharge and trended toward decreased length of stay when compared to those who did not receive Humavant CR caloric fortifier.*^{§,3}



This study is a subset analysis of data originally published in 2014 by Hair et al in *The Journal of Pediatrics*.

For more information on Humavant® CR human milk caloric fortifier visit Prolacta.com/as.

Important notice: Product not suitable for use as a sole source of nourishment. Infant may require additional vitamins and iron added separately from the product. Product must be used under medical supervision. Not for parenteral use.

References:

- 1 Wojcik KY, Rechtman DJ, Lee ML, Montoya A, Medo ET. Macronutrient analysis of a nationwide sample of donor breast milk. *J Am Diet Assoc.* 2009;109(1):137-140 doi:10.1016/j.jada.2008.10.008
- 2 Hair AB, Blanco CL, Moreira AG, et al. Randomized trial of human milk cream as supplement to standard fortification of an exclusive human milk-based diet in infants 750-1250 g birth weight. *J Pediatr.* 2014;165(5):915-920. doi:10.1016/j.jpeds.2014.07.005
- 3 Hair AB, Bergner EM, Lee ML, et al. Premature infants 750-1,250 g birth weight supplemented with a novel human milk-derived cream are discharged sooner. *Breastfeed Med.* 2016;11(3):133-137. doi:10.1089/bfm.2015.0166

*Product used in these studies was named Prolact CR®. The formulation of Prolact CR® and Humavant® CR is the same. Prolact CR® is the trade name in North America, and Humavant® CR is the trade name outside North America.

†Mean ± SD

§Results were significant after adjusting for bronchopulmonary dysplasia, gestational age, and birth weight.